

# ***Beyond Waste:*** **A Sustainable Materials Management Strategy for New York State**

***Environmental Finance Center Conference***



***Smart Management For Small Communities***

***Ellicottville, NY***

Presented By  
David Vitale, Director  
Bureau of Permitting & Planning  
Division of Materials Management

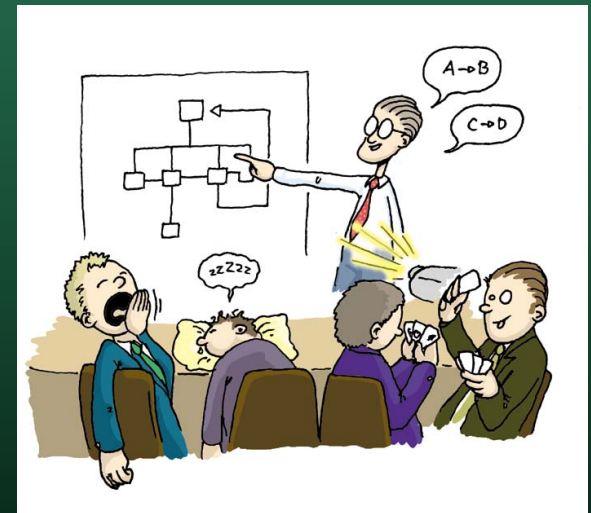
October 7, 2011

NYS Department of Environmental Conservation



# Presentation Outline

- Why did NYS develop a new Plan?
- Why a new approach?
- The planning process
- The Plan's content
- Implementation status
- Impact on municipalities
- Funding programs

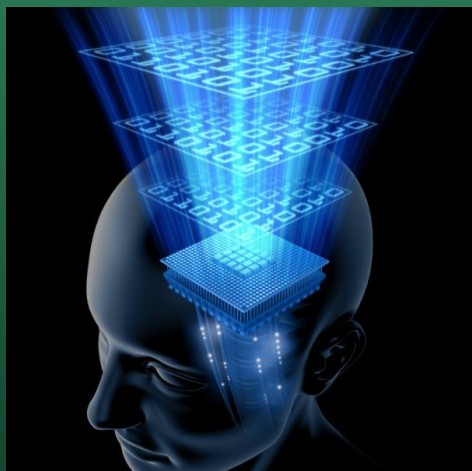


# Why a New Plan?

- Review 20+ years of experience
- Set new goals
- Address emerging issues and materials
- Finite resources and new opportunities
- Recommend a course of action



# Why a new approach for NY?



- Environmental impact of wasting
  - Upstream/Life Cycle Impacts
  - GHG & Energy Use
  - Land & Resources
- Jobs and economic opportunity in reuse and recovery of materials
- Recycling reached a plateau

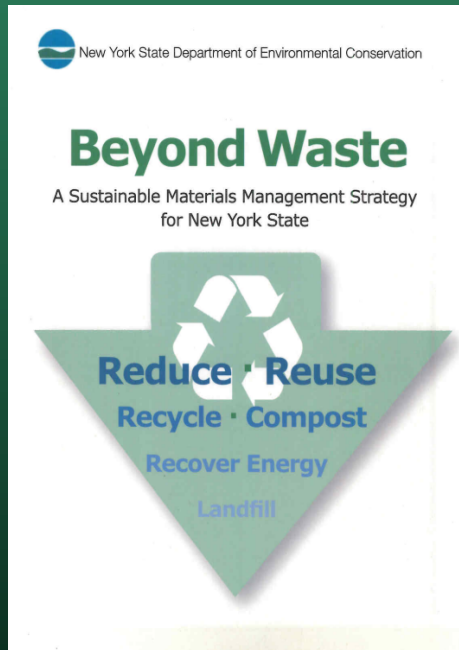


# The Planning Process

- Stakeholder Meetings (9)
- Advisory Group
  - 15 Members representing various stakeholder groups and regions of the state
- Released Draft (for public comment) – May 2010
- Hearings and Meetings – Summer 2010
- Final Plan Adopted – December 27, 2010



# ***Beyond Waste: Key Findings***



- 20 years after SWMA, still wasting 65-80% of materials
- Waste contributes to climate change
- Wide variation in program performance statewide
- Organics are 30 percent of MSW; recycling organics critical to progress



# ***Beyond Waste: Vision***

A materials management system that:

- Captures economic value of materials
- Minimizes greenhouse gas emissions
- Maximizes materials and energy efficiency
- Impacts the design of products and packaging
- Achieves ever-increasing levels of recovery



# ***Beyond Waste:*** **Reduction Goals**

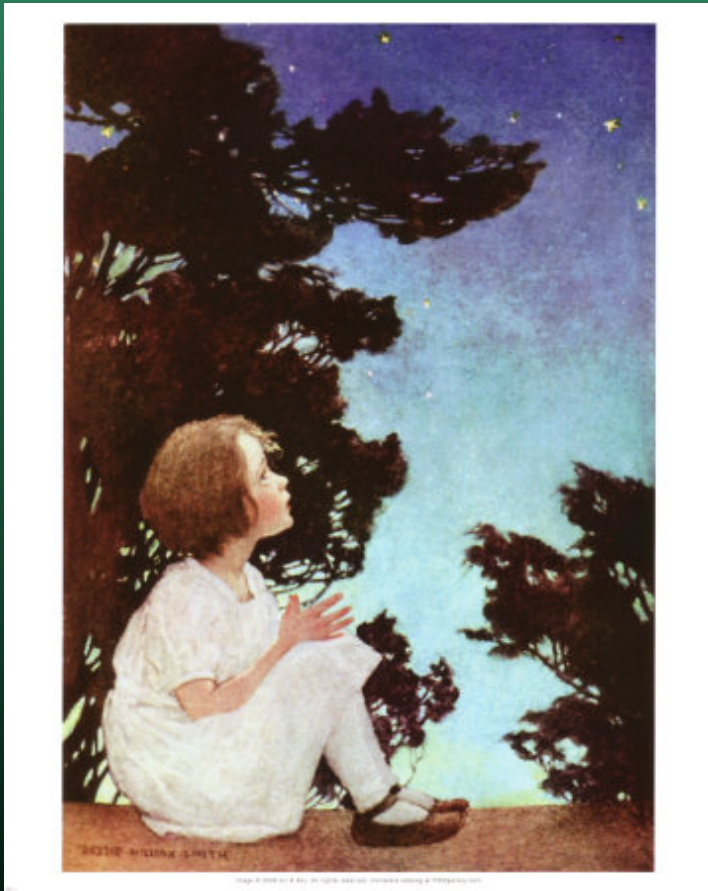
- A progressive reduction in the amount of waste managed in combustors and disposed in landfills on a per capita basis
- Reduce from 4.1 lbs/person/day disposed to:
  - 3.4 lbs/person/day in 2014
  - 1.7 lbs/person/day in 2020
  - 0.6 lbs/person/day in 2030





A goal without a plan  
is just a wish.

--Antoine de Saint-Exupery, French  
writer (1900 - 1944)



# *Beyond Waste:* Major Areas of Focus

- Improve waste prevention, reuse, recycling
- Increase organics recycling – especially food waste
- Implement product and packaging stewardship



# *Beyond Waste:* Agenda For Action



- Legislative Initiatives
- Programmatic Initiatives
- Regulatory Initiatives



# *Beyond Waste :* Initial Activities

- Reorganized Program and Created the Division of Materials Management
- Developed Schedules for 2011 Plan Initiatives



# *Beyond Waste:* Recommended Legislative Initiatives

- Update Solid Waste Management Act
- Product Stewardship
- Revenue Generating Programs
- Returnable Container Law
- Mercury Containing Products

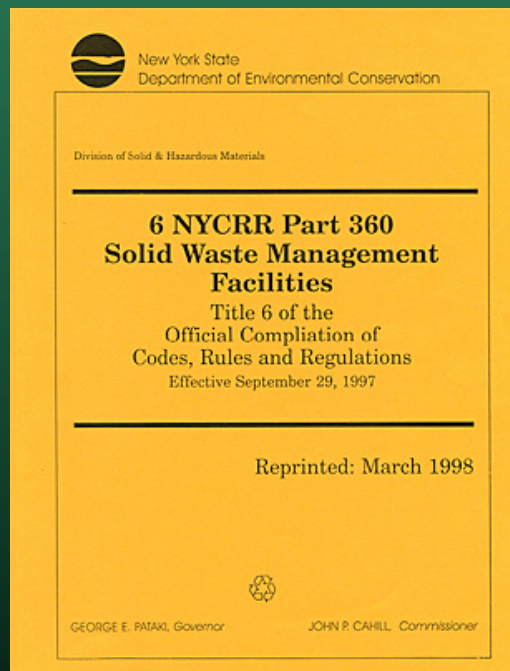


# *Beyond Waste:* Implement Product Stewardship

- Enact PS for:
  - Household Hazardous Waste
  - Pharmaceuticals
  - Paint
  - Carpets
  - Automobiles
  - Mercury Containing Products
  - Packaging
  - Appliances



# *Beyond Waste:* Regulatory Initiatives



- Update Part 360 Solid Waste Management Facility Regulations



# ***Beyond Waste:***

## **Programmatic Initiatives**

- State Agencies Lead By Example
- Comprehensive Materials Management Planning
- Outreach & Technical Assistance
- Educate the Public
- Combat Climate Change
- Develop Reuse & Recycling Infrastructure and End Use Markets





# Status of LSWMPs

- Currently 68 Planning Units
- 40 LSWMPs currently expired
  - 21 submitted for review
  - 3 Approvable
  - 18 In Various Review Phases



# Prime Focus Area: LSWMPs

- Planning units will be asked to:
  - Evaluate and propose methods to reduce waste, increase reuse, recycling and composting
  - Work as aggressively as possible to reduce waste destined for disposal



# Key Elements of LSWMPs

- Maximization of Reduction & Recovery in All Generating Sectors
- Organics Recovery Strategies
- PAYT/SMART Alternatives
- Education & Enforcement Opportunities
- Data Collection



# LSWMPs : Commonly Expressed Areas of Concern

- Lack of Data/Information
- Fiscal Constraints
- Staffing Limitations
- Lack of Expertise
- Lack of Political Support



It is a bad plan that admits of no modification.

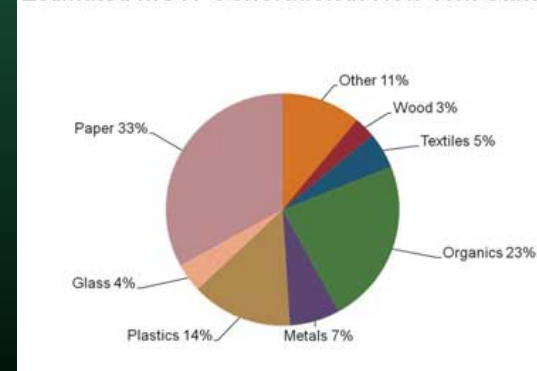
-- Publilius Syrus – Maxim 469 (circa 42 B.C.)



# LSWMP Tools Developed

- **Waste Composition and**
- **Waste Projection**
  - Information to help communities in evaluating appropriate materials management strategies and implementing NYS's solid waste management hierarchy.

Estimated MSW Generation in New York State



# LSWMP Tools Developed

- LSWMP Outline and Checklist
- Model Local Plans
- Implementation Schedule Instructions and Support tools
- Marketing Information thru ESD



# LSWMP Tools in Development

- Model recycling ordinances
- Model PAYT/SMART ordinance
- Model Hauler Licensing Ordinance
- Technical Guidance Documents
  - Organics Recycling and Composting
  - Update to 1988 Technology Assessment





# Current Funding Opportunities

- Funding available from the Environmental Protection Fund (EPF)
- Determined annually as part of the budget



# Types of Grants

- Recycling capital investment in facilities and equipment.
- Recycling education and recycling coordinator salaries.
- Waste reduction projects.
- Household hazardous waste collection & disposal projects.
- Landfill Closure
- Landfill Gas Management



**Reimbursement grants with cap of \$2 million per project.**

NYS Department of Environmental Conservation



# Grants Awarded

Since 1988, DEC has awarded .....

Project Type	Number of Contracts	Dollar value
Recycling Equipment	769	\$208.7 million
Organics Recycling	191	\$31.5 million
Education	160	\$30.8 million
Waste Reduction	37	\$8.4 million
HHW	461	\$30.2 million
Landfill Closure	254	\$307.5 million
Landfill Gas Management	12	\$12.3 million
<b>Total</b>	<b>1,554</b>	<b>\$699.5 million</b>



# Information & Contacts



Beyond Waste Plan: David Vitale

[dxvitale@gw.dec.state.ny.us](mailto:dxvitale@gw.dec.state.ny.us)

LSWMPs & Grants: Gus Carayiannis

[gjcarayi@gw.dec.state.ny.us](mailto:gjcarayi@gw.dec.state.ny.us)

Regional Office (Buffalo): Mark Hans

[mjhans@gw.dec.state.ny.us](mailto:mjhans@gw.dec.state.ny.us)

