

# Invasive Species: A Pest to Local Governments



Steps to reduce cost and harm to  
communities, lands and waters

Hilary Smith  
Director, Adirondack Park Invasive Plant Program  
Environmental Finance Center Local Leaders Conference  
April 24, 2014



# Presentation Outline

- What's the big deal about invasive species?
- What programs are underway?
- What actions can communities take?
- What resources are available to you?

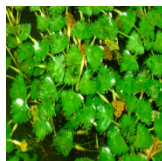


Purple loosestrife invasion

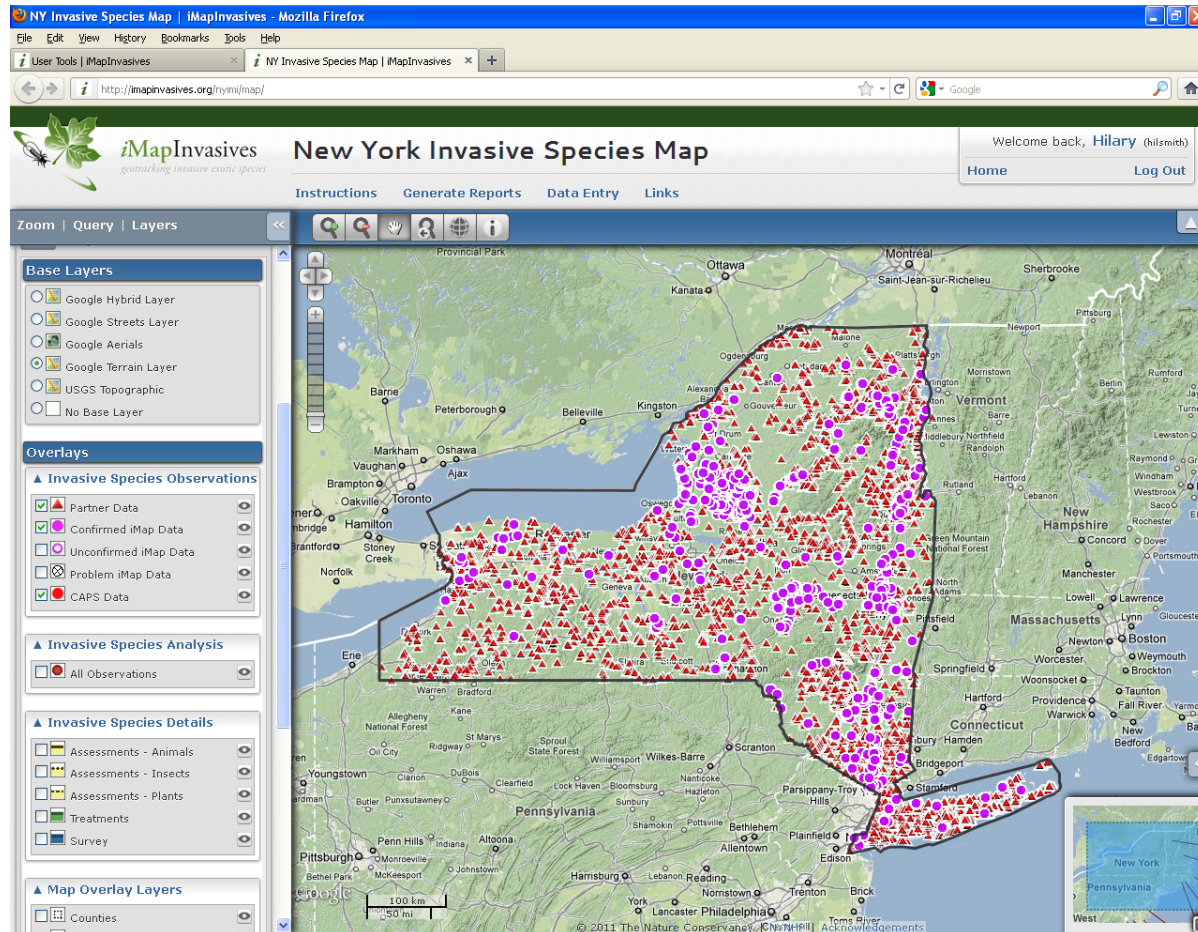


# Invasive Species

- ✓ Are not native & cause economic, societal, or ecological harm
- ✓ Include plants, animals, pests, pathogens
- ✓ Degrade fisheries, forestry, agriculture, recreation, aesthetics, cultural heritage



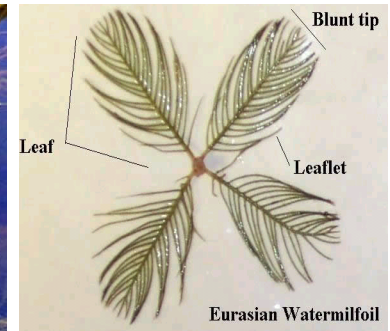
# Invasive species are here...



and include old familiars and new arrivals!



# Eurasian Watermilfoil





# Zebra Mussel

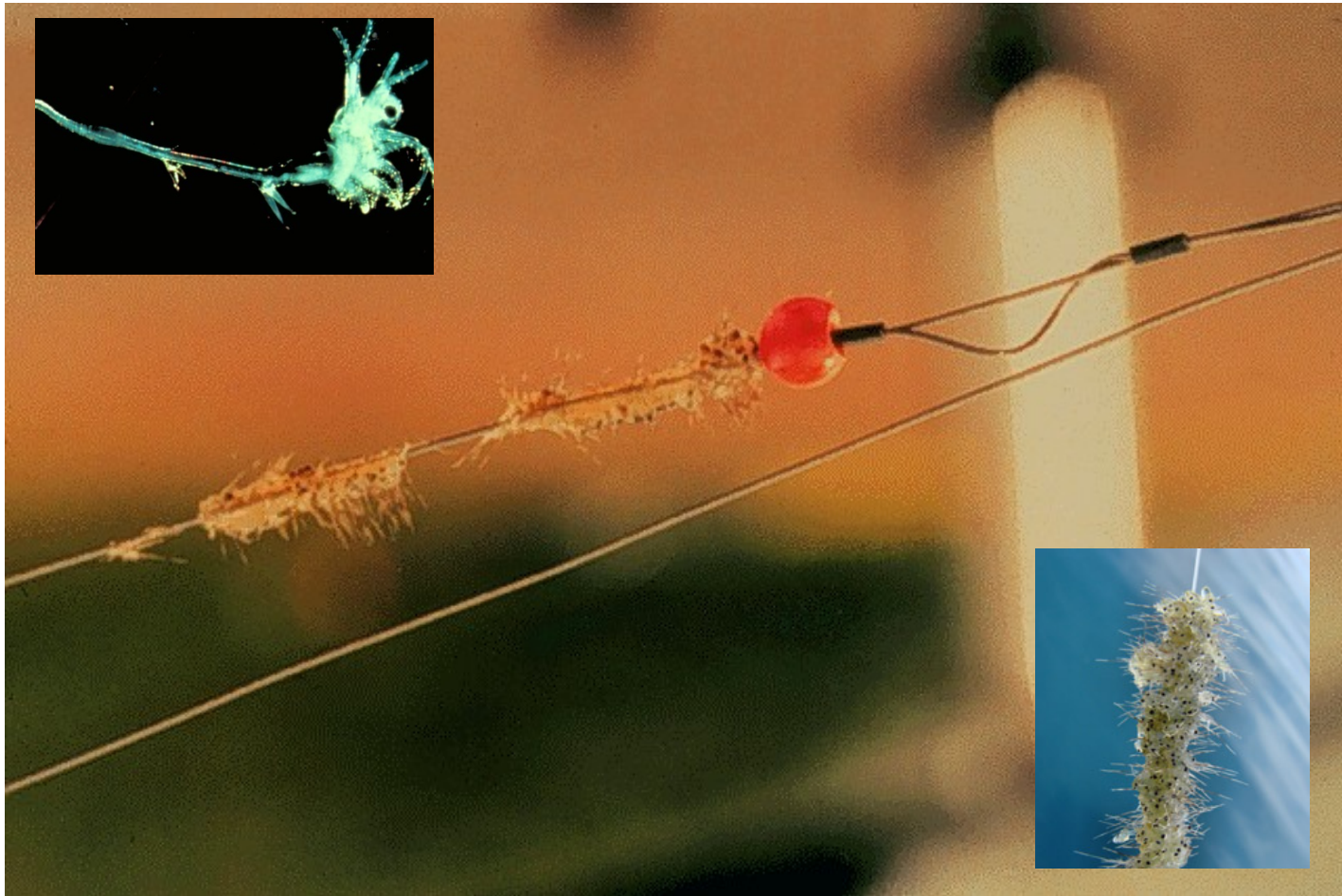




# Hydrilla

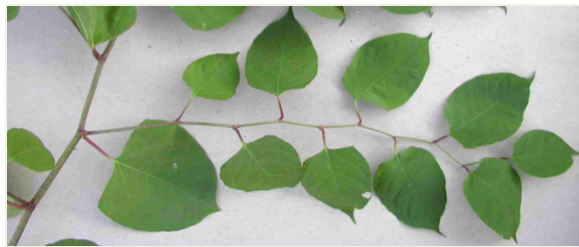


# Spiny Waterflea





# Japanese Knotweed





# Swallowwort

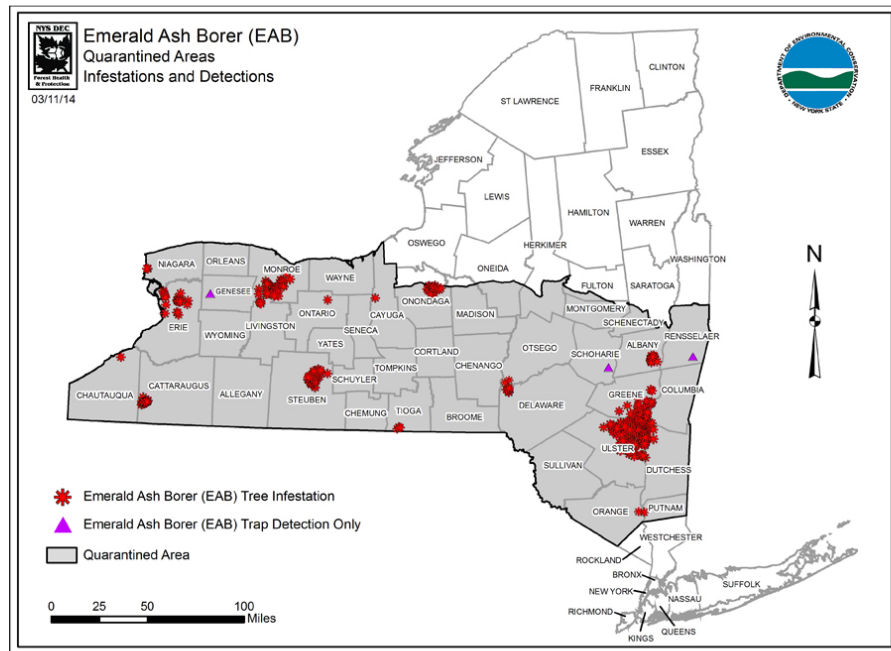




# Giant Hogweed & Wild Parsnip

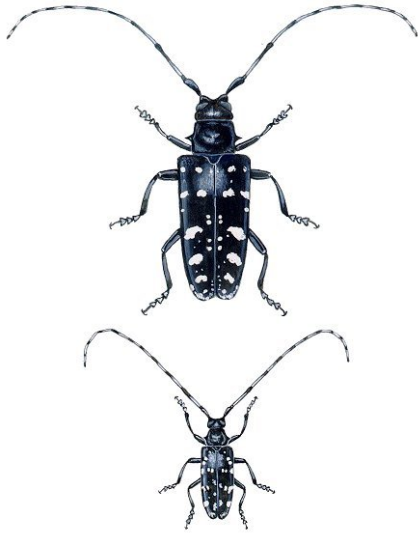


# Emerald Ash Borer





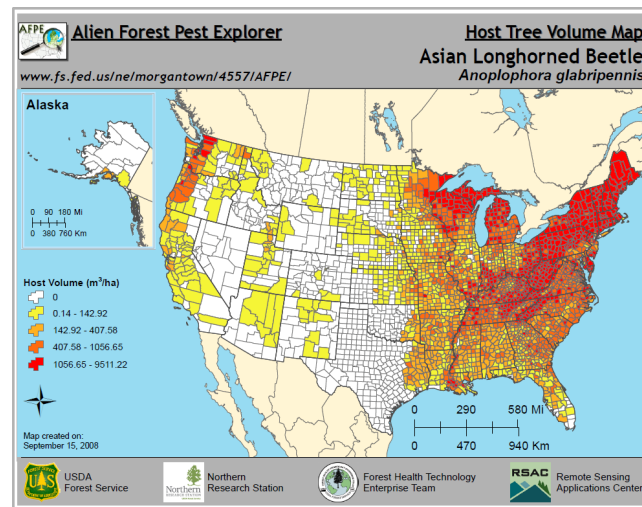
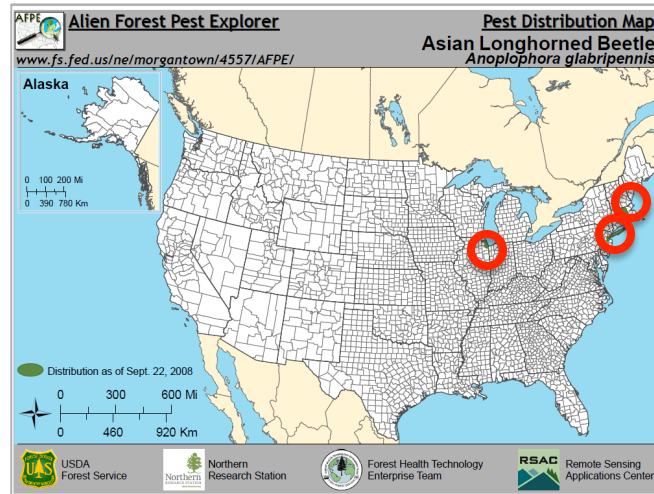
# Asian Longhorned Beetle



Asian Longhorned Beetle



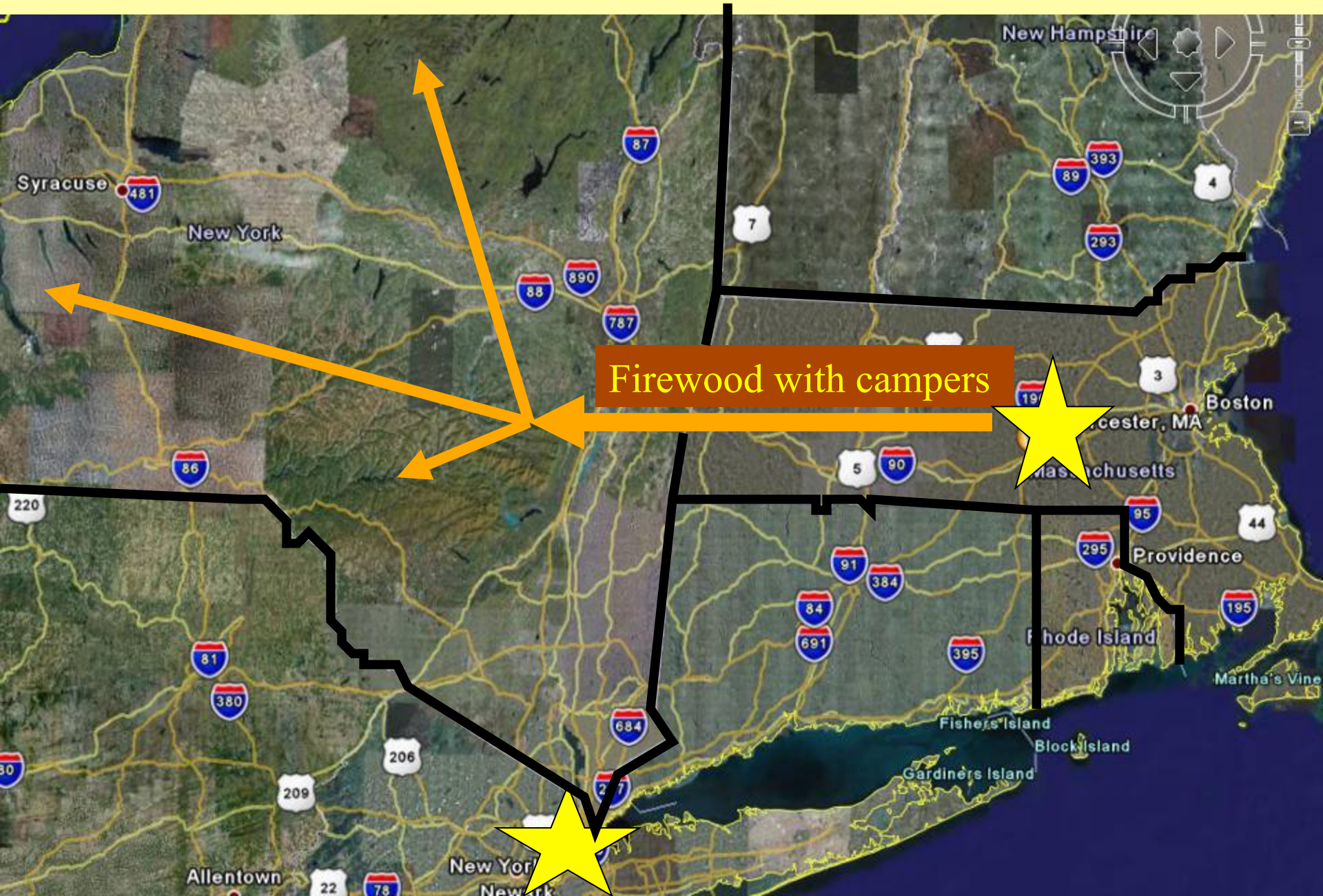
Native Look-Alike  
White Spotted Pine Sawyer





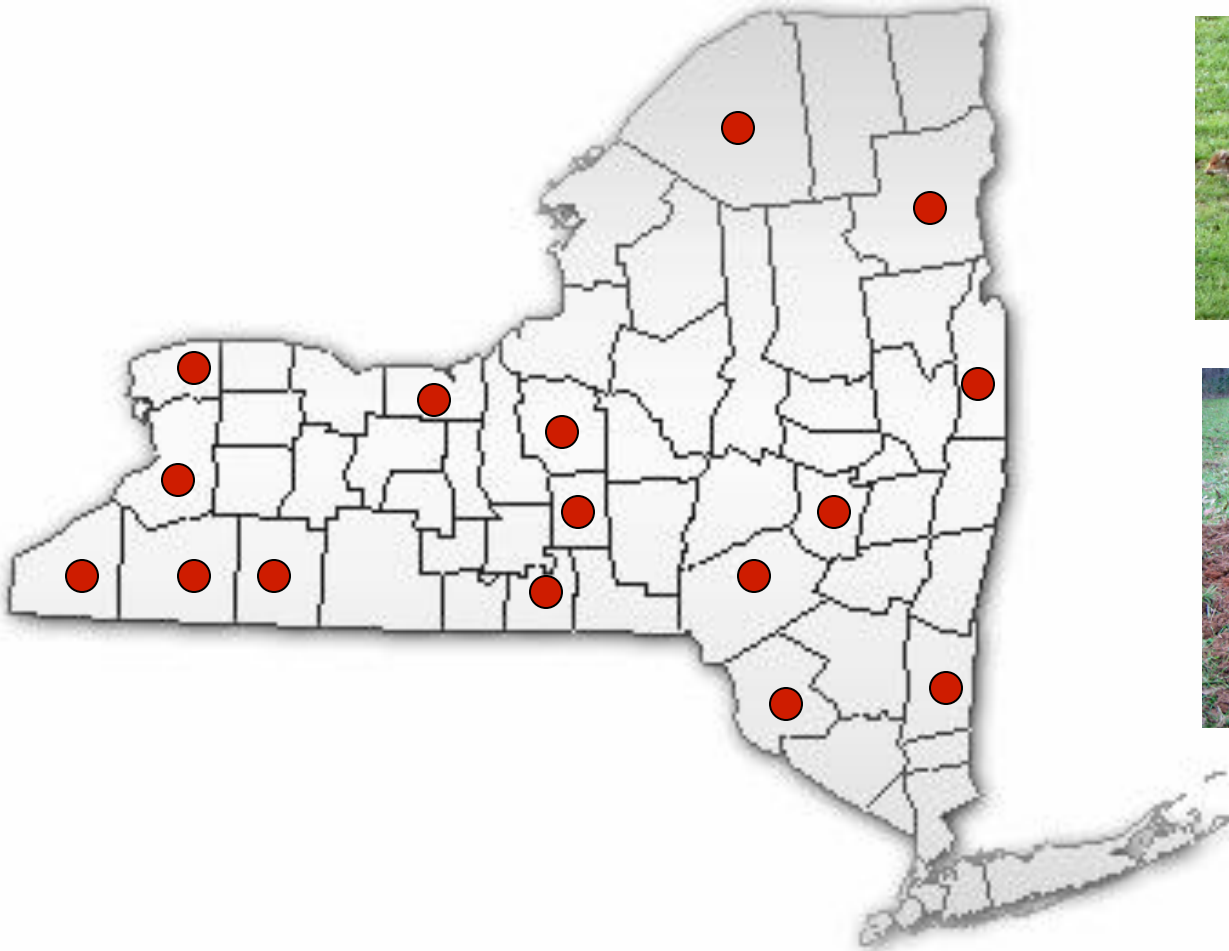
# Asian Longhorned Beetle Outbreaks

The map displays the Northeastern United States, including parts of New York, Massachusetts, New Jersey, and Rhode Island. A brown box labeled "Firewood with campers" is positioned in the center. Three orange arrows originate from this box, pointing to specific locations marked with yellow stars: one in western New York near Syracuse, one in eastern Massachusetts near Worcester, and one in northern New Jersey near Allentown. The map also shows major interstate highways (e.g., I-19, I-84, I-95) and state boundaries.





# Feral Hogs



# Impacts and Costs are Many!

## IMPACTS

- **Public Health and Safety**
  - Water quality / Water drainage
  - Swimming (zebra mussel shells, plant beds)
  - Road Safety (visibility)
  - Street / Public Park Safety (hazard trees)
  - Human health (Giant hogweed)
  
- **Recreation**
  - Boating
  - Swimming
  - Fishing
  - Camping / Hiking
  
- **Tree regeneration / Timber production**
- **Fish survival**
- **Crop productivity**
- **Tourism**
- **Property values**
- **Budgets**

## COSTS

**Plant removal / Tree removal**

**Plant, Fish, Tree removal**

**Plant removal / Tree cutting**

**Treatment**

**Treatment**

**Lost revenue**

**Lost tax base**

**Prevention and Management**



# Key Pathways for Local Introductions

- Watercraft, Bait buckets, Gear
- Nurseries / Landscaping Plantings
- Highway / Construction equipment
- Infected fill / Mulch / Hay
- Firewood



# Where do most invasions occur?

- Accessible lakes
- Roadsides
- Hamlets
- Campgrounds
- Parking areas





**So, what do we do now?**

**State Approach**

**Regional**

**Local**

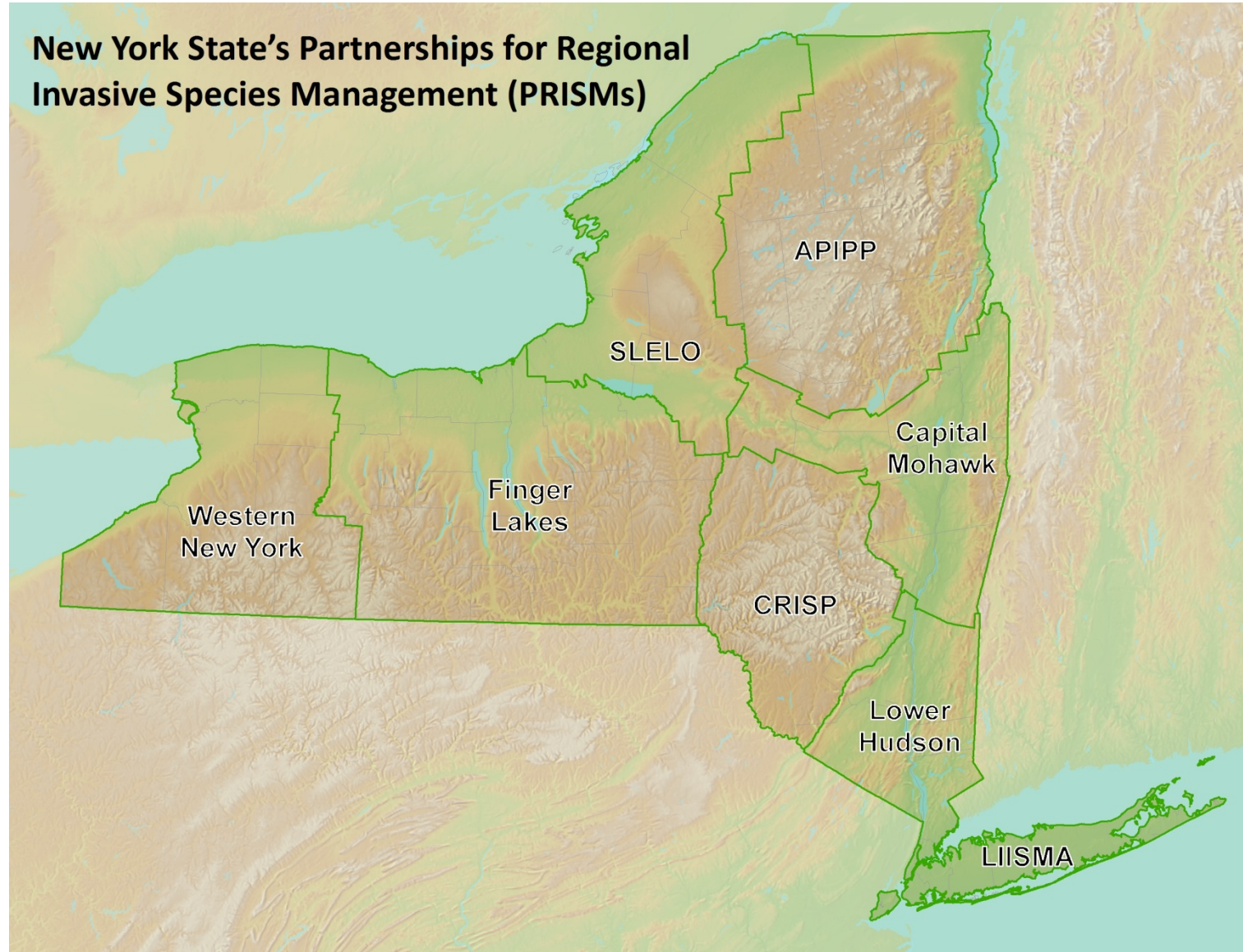
# Statewide Approach



**Coordinated, Cooperative, Comprehensive, Funded**



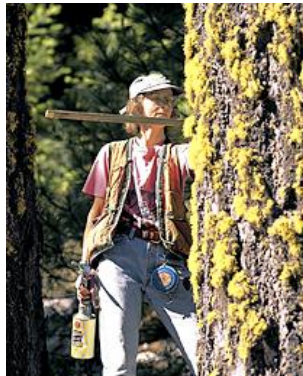
# Regional Approach





# What is a PRISM?

**A regional partnership of diverse stakeholders formed to address the threat of invasive species in a cooperative, comprehensive, cost-effective way across a designated geographical area.**





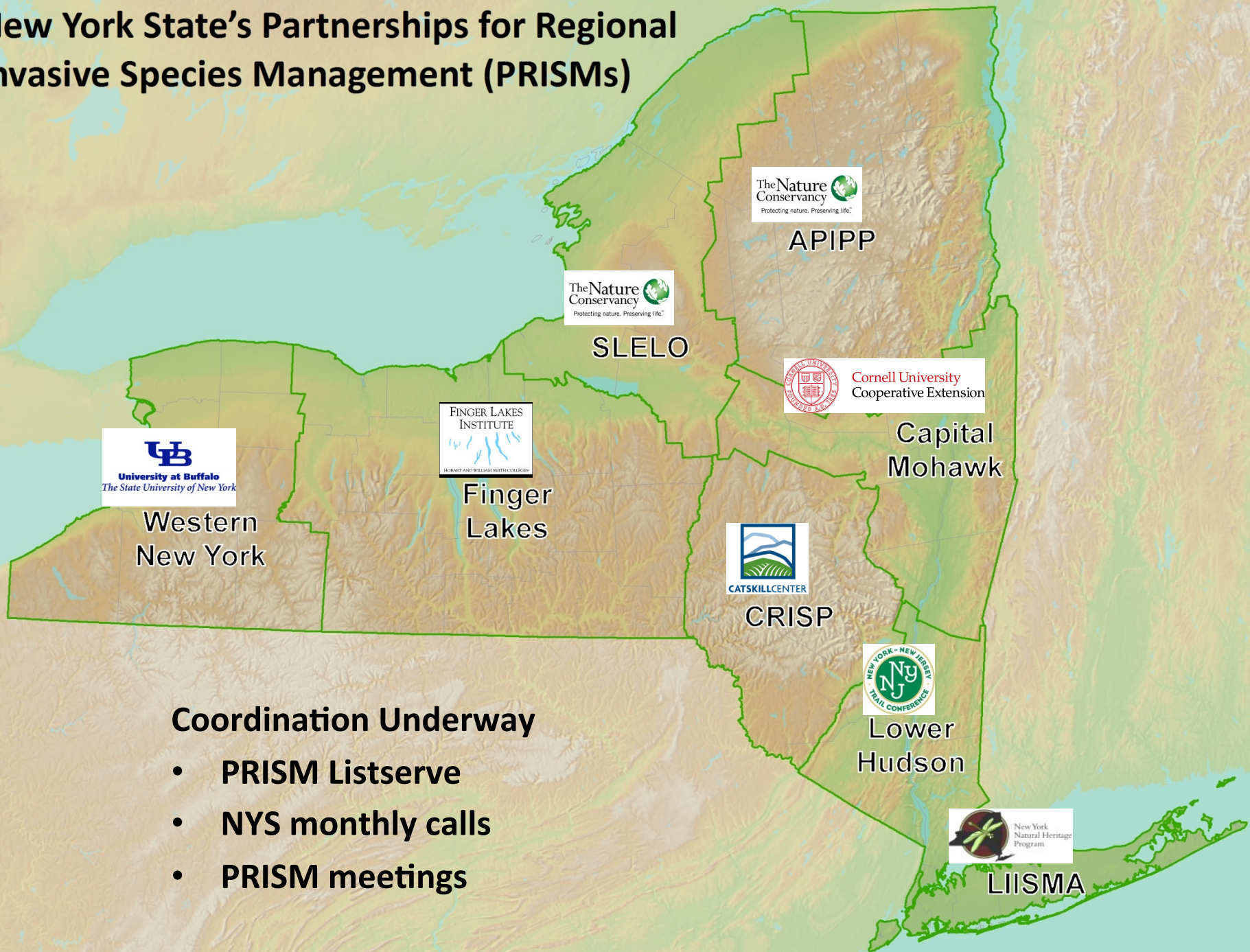


# Benefits of Collaboration

- Provides a channel for communication.
- Protects the economic value of public and private lands used for agriculture, forestry, fisheries and recreation.
- Helps secure funding or identifies a method for funding.
- Everyone gains efficiency, saves money, and increases their ultimate success.
- Enhances and unites individual ownerships and jurisdictions.
- Cooperators can locally prioritize invasive species of concern.
- Focuses attention and provides a united effort to local, state, and federal legislators.
- Communicates to the general public in a coordinated way.
- Pools talents and resources.
- Addresses the problem of invasive species spreading from neighboring lands before the damage occurs.



# New York State's Partnerships for Regional Invasive Species Management (PRISMs)



## Coordination Underway

- PRISM Listserve
- NYS monthly calls
- PRISM meetings





# PRISM Core Functions

- **Coordination**
  - (among partners)
- **Volunteers**
  - (recruit & train)
- **Education**
  - (identify & meet needs)
- **Early Detection**
  - (monitoring network)
- **Rapid Response**
  - (pilots)
- **Eradication**
  - (implement projects)
- **Research**
  - (citizen science)
- **Planning**
  - (strategic planning)

**New York State's Partnerships for Regional  
Invasive Species Management (PRISMs)**



**Mission:**

To protect the Adirondack region from the negative impacts of non-native, invasive species.

**Goals:**

1. Prevent new introductions.
2. Rapidly detect and eradicate new infestations.
3. Manage existing priority infestations to mitigate impacts.

**Activities:**

Coordination, Prevention, Education & Outreach, Training, Survey & Mapping, Control & Management, Monitoring, Research, Planning, Policies, Funding

**Partnerships:**

3 coordinating staff, 1 seasonal  
4 principal partners  
30+ cooperating organizations  
100s of volunteers  
EPF Funding





# Local Approach

- ☐ Familiarize yourself with the bad actor invasive species in your community.
  - ☐ Which ones pose the biggest threat?
- ☐ Identify current invasive species initiatives in your community and determine resources available to you.
  - ☐ PRISMs
  - ☐ Soil and Water Conservation District
  - ☐ Cornell Cooperative Extension
  - ☐ Lake / Landowner Associations
  - ☐ Others
- ☐ Identify staff or volunteers who could serve as a liaison on invasive species issues.
- ☐ Form alliances and networks.
- ☐ Focus on prevention.
- ☐ Start now.



# What Communities Are Doing: Is Yours?

**Prevention = Low Cost – High Return**

## **General**

- Link website to [www.nyis.info](http://www.nyis.info) or PRISM website ([adkinvasives.com](http://adkinvasives.com))
- Raise awareness among staff, planning boards, tourism centers, businesses, residents
  - » newsletters, mailings, etc.
- Incorporate invasive species actions into community planning initiatives; community events
  - » community plans, comprehensive management/landuse plans, watershed plans
  - » conservation field days, regattas, fishing tournaments



# What Communities Are Doing: Is Yours?

## Prevention = Low Cost – High Return



### Terrestrial Invasive Plants

- Zoning Ordinances mandate landscaping with only non-invasive plants.
- Tree/shrub sales offer only non-invasive plants.



### Aquatic Invasive Species

- Local transport law makes it illegal to enter, exit public launches with visible aquatic species.
- Invasives brochure distributed during fishing / boating license registration or renewal.
- Boat launch stewards educate boaters and intercept invasives.
- Signage is posted at launches and river access sites.

### Forest Pests



- Ensure landowners and private campgrounds know about forest pests and firewood regulations.
- Endorse / enforce firewood regulations.

# What Communities Are Doing: Is Yours?

## Management

### General

- Plan for rapid response and set aside emergency funding.



### Terrestrial Invasive Plants

- Transfer stations allow free disposal of invasive plants.
- Highway Departments assist plant controls.
- Cost-share plant management initiatives.



### Aquatic Invasive Species

- Cost-share plant management initiatives.



### Forest Pests

- Learn which trees are subject to invasion in your community.
- Plan and budget for hazard tree removal.



# Funding Opportunities

- **Local**
  - **Cost-Share**
    - Village, Town, and County Governments
    - Lake Associations, Landowner Associations
    - Soil and Water Conservation Districts
  - **New Revenue**
    - Tax Management Districts
    - Penalties / Fines / Fees
- **State**
  - **Environmental Protection Fund**
    - Invasive species line for statewide program
  - **Grants:**
    - NYS Economic Regional Development Councils
    - NYS DOS Local Waterfront Revitalization Program
    - Finger Lakes Lake Ontario Watershed Alliance
    - NYS DEC Eradication Grant Program (on hold)
- **Federal**
  - **Grants**
    - US Federal Highway Administration - Scenic Byway Program
    - US Fish and Wildlife Service
    - US Department of Agriculture, US Forest Service
    - US Environmental Protection Agency
    - US Natural Resources Conservation Service
- **Private**
  - **Donors**
  - **Foundations**

# **Case Studies**



# Town of Inlet: Regional Inlet Invasive Plant Program (RIIPP)

NoKnotweed - In Adirondacks Regional Inlet Invasive Plant Program - RIIPP - Mozilla Firefox

File Edit View History Bookmarks Tools Help

Continental Dialogue - About the Dia... Education and Outreach - Google Drive NoKnotweed - In Adirondacks Regi... x +

noknotweed.org/index.html

Most Visited Getting Started Free Hotmail http--www.nps.gov-pl... Suggested Sites Web Slice Gallery

## NoKnotweed - In Adirondacks Regional Inlet Invasive Plant Program

RIIPP PROPERTY OWNERS SLIDE SHOW VOLUNTEERS TREAT KNOTWEED

### Regional Inlet Invasive Plant Program



**Tax-deductible donations are needed for our 2014 efforts.**  
Please send donations to **Town of Inlet, Invasive Plant Control Fund; Town of Inlet PO Box 179, Inlet, NY 13360.**  
**Thanks!**

Inlet and surrounding communities are making great strides in efforts to control Japanese Knotweed – an invasive plant which threatens the Adirondacks. Yet much remains to be done. See "The Knotweed Factor: The citizen battle against a notorious invasive", "Local effort to rid Adirondacks of Japanese Knotweed proving effective", "Award for plant eradication efforts." and "Doug Johnson: Japanese Knotweed Combatant".

Since 2008 the Town of Inlet has taken the lead, with support from Town Supervisor John Frey and Town Clerk Patty Wittmeyer. Patty coordinates Inlet's efforts including collecting permission forms and tax-deductible donations. Ellen Collins from Blue Mountain Lake and Terry DeArmas from Indian Lake are coordinating efforts there – identifying sites, collecting permission forms, and fund raising. Elizabeth Mangle from the Hamilton County Soil and Water Conservation District is helping with county-wide efforts. The Adirondack Park Invasive Plant Program is helping coordinate region-wide efforts. Doug Johnson, a summer resident of 7th Lake and certified pesticide applicator, has helped spearhead efforts. In 2011 Evelyn Greene helped in North Creek and North River, Chuck Taylor in Long Lake, Katy Weil in Lake Piseco, Larry Master in Lake Placid, Leslie Karasin in Saranac Lake, and Gary Lee in Inlet. Certified applicators Ryan Burkum and D. Avery Menz with Eric Menz did most of the treatments in 2011. We received a grant from the Adirondack Park Invasive Plant Program in 2011, 2012, and 2013. In 2012 new volunteers include Jan McCann in Chestertown, Bob Manning and Roy Keats in Garnet Lake, Scott Chartier in Tupper Lake, and John Wolfken in Warrensburg. In 2013 we welcomed Anne Green in Bolton Landing and Nick Rose in Old Forge as new volunteers, and certified applicator Kathy Vanselow.

# Multiple Villages, Towns, County: Aquatic Invasive Species Transport Law





# Town of Chester: Mandatory Inspection and Decontamination



## Be a Good Steward

### STOP AQUATIC HITCHHIKERS!

Aquatic invasive species are a serious threat to all lakes, ponds, rivers and streams. Please be a good steward and help protect New York's waters.

*Here is some helpful information*

#### Aquatic Invaders to Look Out For:

- Water Chestnut**
  - Triangular leaves with toothed edges
  - Sharp-edged seeds
  - Can form dense mats
- Zebra/Quagga Mussel**
  - Tiny D- or oval-shaped striped shells
  - Can cover hard surfaces
  - Sharp shells can cut feet
- Asian Clam**
  - Light green to brown shells with circular elevated ridges
  - Typically less than 1/2-inch in size
  - May outcompete native clams/mussels
- Eurasian Watermilfoil**
  - Feathery leaves in whorls of 4
  - Forms dense beds
  - New plants sprout from fragments
- Spiny Waterflea**
  - Tiny crustacean with long, barbed tail
  - Competes with small fish for food
  - Masses can clog guides of fishing rods
- Hydrilla**
  - Four to 8 blade-like, slightly toothed leaves form whorls around stem
  - Can form dense plant beds
  - Thrives in a variety of environments

#### WATERCRAFT CHECK POINTS

To learn more about how you can help stop the spread of aquatic invasives, scan this QR code with your smartphone or visit [www.dec.ny.gov/animals/46221.html](http://www.dec.ny.gov/animals/46221.html)

**STOP AQUATIC HITCHHIKERS!**

DEC AIB (1/1/12)

**This is a public service announcement brought to you by the Adirondack Landowners Association. Invasive Species Information provided by the NYS Department of Environmental Conservation.**

[www.adklandowners.org](http://www.adklandowners.org) [www.dec.ny.gov](http://www.dec.ny.gov)

# Warren County: Invasive Species Emergency Response Fund

PostStar.com

Winner of the 2009 Pulitzer Prize



63°  
Few Clouds  
Weekly Forecast ▾

sponsored by

TURNING STONE

Advanced Search | Privacy | About Our Ads

News ▾

Home

News

Opinion

Sports

Life

Entertainment

Community

Obits

Blogs

Multimedia

Shop

Homes

Cars

Jobs

Hot Topics

Program encourages heroic health • Woman charged with felony DWI • Fire destroys greenhouse • Man charged with gun theft • Cogen plant impacted cos

Supervisors seek subdividing property around Pleasant Valley nursing home

Clearing the way: Demolition begins on former Grand Union

Man indicted in dog's death

Two people taken to Albany Medical Center after White Creek crash

Home / News / Local

## Proposal would send invasive species aid to five Warren County towns

Recommend {0}

Tweet {0}

+1 {0}

Share {2}

Print

Email

★

November 03, 2013 4:22 pm • DON LEHMAN -- dlehman@poststar.com (0) Comments

Five Warren County towns stand to gain a chunk of money from Warren County to battle invasive species in their waterways under a plan proposed by a longtime member of the county Board of Supervisors.

The funding would come from \$300,000 that the county plans to divvy up next year to fight invasive flora and fauna in Lake George and other lakes in the county.

Horicon Supervisor Ralph Bentley, chairman of the county board's Public Works Committee, has asked that funding to treat six other lakes be given out next year, with \$25,000 awarded for each

THE D'ELLA 500 IS ON!!!

\$500 DOWN DELIVERS

ON OUR MOST POPULAR VEHICLES\*\*

2014 GMC TERRAIN

MODEL #TLF2G

2014 BUICK VERANO

MODEL #4P6G0

ALL NEW SATURDAY SERVICE HOURS 8:00 - 4:00PM TO BETTER FIT YOUR LIFESTYLE.

D'ELLA

BUICK GMC CADILLAC

855-361-2631

WHERE WE GET IT DONE FOR YOU!

HOURS: Monday-Thursday 9am-6pm • Friday 9am-6pm • Saturday 9am-5pm

SUBSCRIBE NOW!

THE POSTSTAR poststar.com

today's deal Hop on it

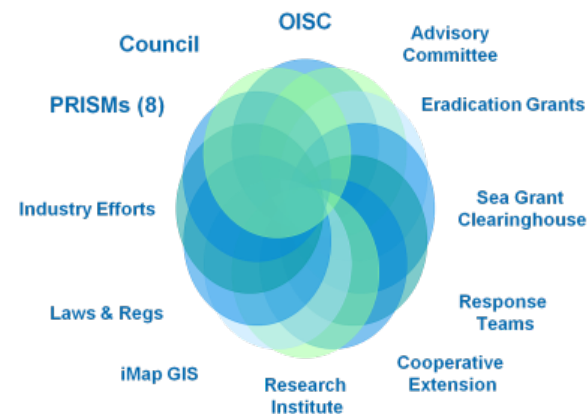
THE POSTSTAR poststar.com

The Post Star - Get a 7 day Subscription for only \$24.97 for 10 weeks (includes full access to poststar.com).



# Assistance We Can Lend

- Planning support
- Networking with other communities
- Leverage funding
- Grant review
- Species identification & management advice
- Training opportunities for public, staff
- Educational materials / distribution maps



# NY Information Clearinghouse

[www.nyis.info](http://www.nyis.info)

Browser address bar: <http://www.nyis.info/> Reader Google

Navigation links: Apple, Yahoo!, Google Maps, YouTube, Wikipedia, News (559), Popular


## NEW YORK INVASIVE SPECIES

THE NEW YORK INVASIVE SPECIES CLEARINGHOUSE  
CORNELL COOPERATIVE EXTENSION INVASIVE SPECIES PROGRAM

Logos: Cornell University Cooperative Extension, Sea Grant New York

Navigation: Home, Contact Us, About

Resources | PRISMs & Partners | News & Events | State & Federal Activities



Navigation arrows: < >

### WELCOME TO NYIS.INFO

Welcome to NYIS.INFO, the website of the New York Invasive Species Clearinghouse and the Cornell Cooperative Extension Invasive Species Education Program (CCE ISP). NYIS.INFO is your gateway to science-based information, breaking news, and new and innovative tools to prevent, detect, control and manage biological invaders in New York. NYIS.INFO links scientific research, State and Federal management programs and policy information, outreach education and grassroots invasive species action to help you become part of the battle against invasive species in and around New York. NYIS.INFO is also home to the National Aquatic Nuisance Species Clearinghouse Aquatic Invasive

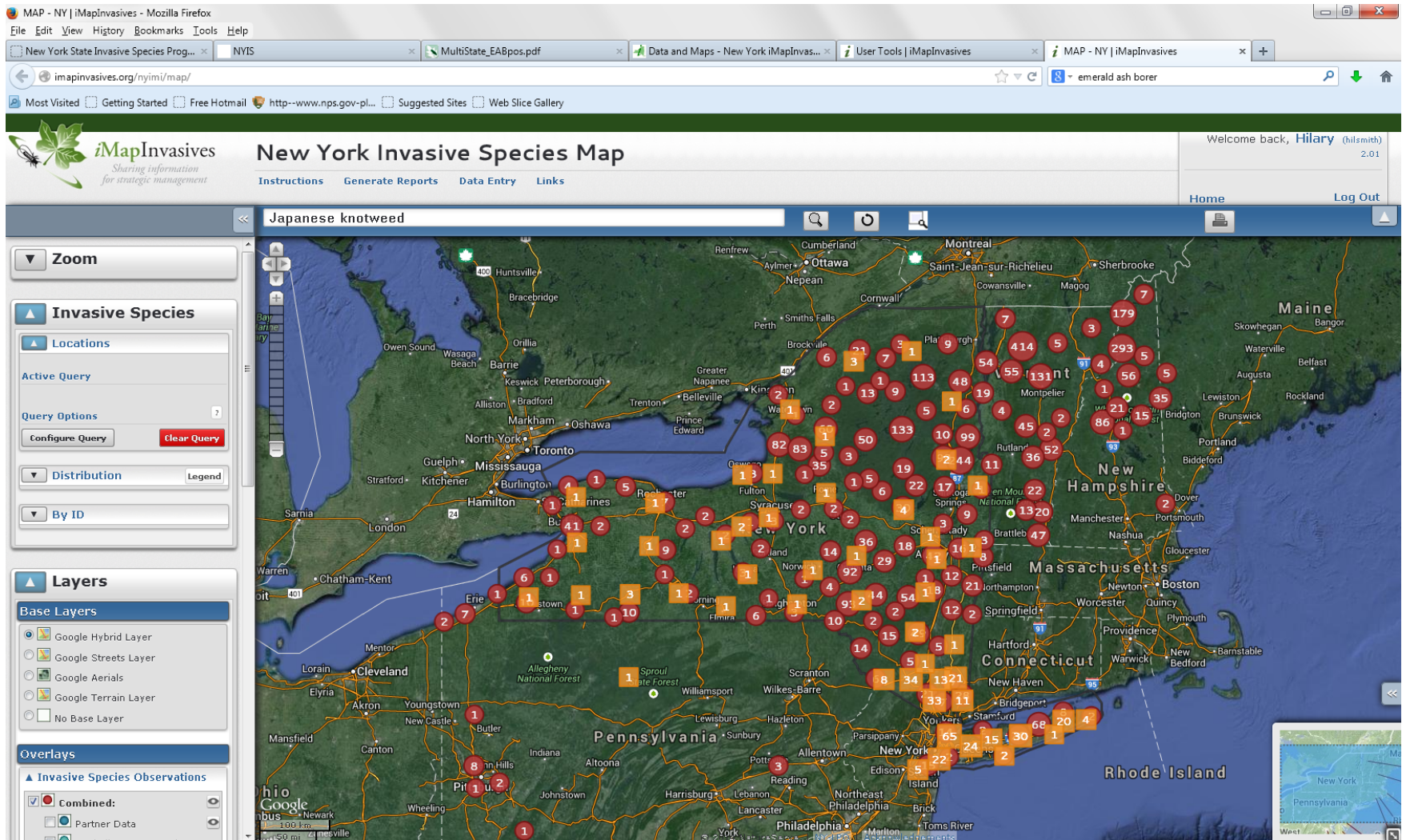
### News

- **September 7, 2011.** CAYUGA LAKE INLET HYDRILLA EDUCATIONAL MATERIALS AVAILABLE [more »](#)
- **September 1, 2011.** BOATERS URGED TO SLOW SPREAD OF AGGRESSIVE INVASIVE PLANT HYDRILLA [more »](#)
- **August 24, 2011.** EMERALD ASH BORER THREATENS 8 BILLION TREES NRP News Clip [more »](#)
- **August 19, 2011.** Ithaca, NY - STATE AND



# NY iMapInvasives

## [www.nyimainvasives.org](http://www.nyimainvasives.org)



# New York State Invasive Species Program



**NEW YORK INVASIVE SPECIES INFORMATION**

**NY INVASIVE SPECIES AWARENESS WEEK**

**Protect New York From Invasive Species**

HOME ABOUT EVENTS WHAT YOU CAN DO SCHEDULING AN EVENT RESOURCES/LINKS MEDIA KIT

**STOP THE INVASION**  
Protect New York From Invasive Species

New York State is celebrating its first Invasive Species Awareness Week July 6-12, 2014!

Invasive species affect all New Yorkers – from hikers to highway personnel, from birders to boaters and from farmers to foresters.

The mission of the New York Invasive Species Awareness Week (ISAW) is to promote knowledge and understanding of invasive species to help stop their spread by engaging citizens in a wide range of activities across the state and encouraging them to take action.

**PRISMs**

- Adirondacks: APIPP
- Capital Mohawk PRISM
- Catskills: CRISP
- Finger Lakes: FL-PRISM
- Long Island: LIISMA
- Lower Hudson PRISM
- SLELO PRISM
- Western PRISM

**Counties**

- Albany
- Allegany
- Bronx
- Brooklyn (Kings)
- Broome
- Cattaraugus
- Cayuga
- Chautauqua
- Chemung
- Chenango
- Clinton
- Columbia
- Cortland

A map of New York State with the PRISM regions highlighted in different colors and labeled: Adirondacks (APIPP), Capital Mohawk, Catskills (CRISP), Finger Lakes (FL-PRISM), Long Island (LIISMA), Lower Hudson, SLELO, and Western PRISM.

**\*\*New York Invasive Species Awareness Week\*\***  
July 6-12, [nyis.info/blog](http://nyis.info/blog)

# Conclusions

- Invasive species ARE a threat to our local economies.
- We CAN make a difference in preventing their spread and minimizing impacts.
- Working together DOES create efficiencies and MAXIMIZES expertise, resources and productivity.



# Questions?

- Hilary Smith, [hsmith@tnc.org](mailto:hsmith@tnc.org), 518-576-2082

